

2020 Undergraduate Seismic Design Competition – SAN DIEGO, CALIFORNIA

for better training of professionals that make a safe future



**Why do we need
good civil engineers**



Why do we need good civil engineers

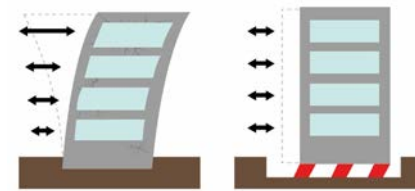
Romania is a seismic country



major earthquakes

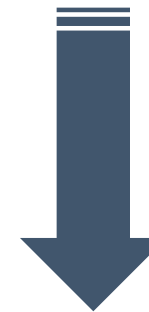
- 1802 – 7.9 – 8.2 M_w
- 1940 – 7.4 M_w
- 1977 – 7.2 M_w

prevention and protection



Seismic design

Necessity for seismic design



GOOD CIVIL ENGINEERS



**What do we need to have
good civil engineers**



What do we need to have good civil engineers

Theoretical part

good training from teachers with national and world recognition



Applied part (practice)

participates in international competitions and internship in design offices



student experimental stand (shake table)





The contest



Earthquake Engineering Research Institute

The Earthquake Engineering Research Institute (EERI) is a leading technical society in dissemination of earthquake risk and earthquake engineering research both in the U.S. and globally. EERI members include researchers, geologists, geotechnical engineers, educators, government officials, and building code regulators. Their mission, as stated in their 5-year plan published in 2006, has three points: "Advancing the science and practice of earthquake engineering; Improving understanding of the impact of earthquakes on the physical, social, economic, political, and cultural environment, Advocating comprehensive and realistic measures for reducing the harmful effects of earthquakes".



Student Leadership Council

Earthquake Engineering Research Institute, through the Student Leadership Council, organizes between March 3th – 6th, 2020 an international earthquake engineering contest called "2020 Undergraduate Seismic Design Competition".



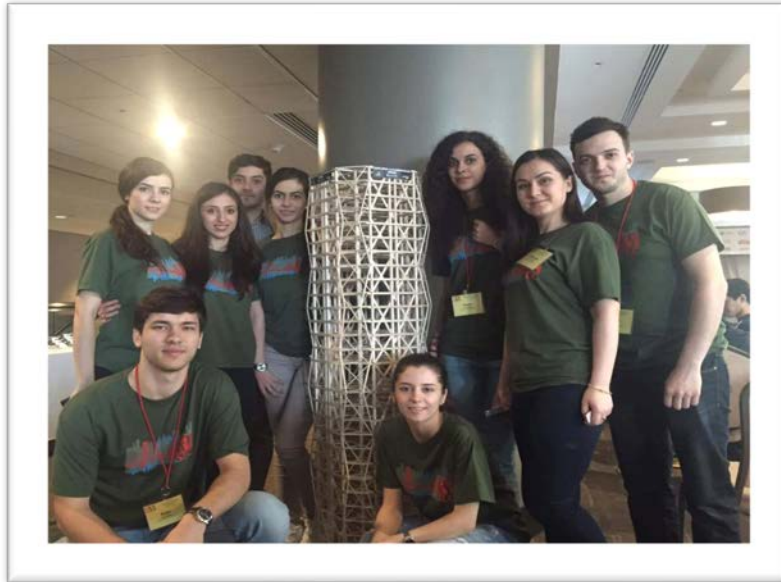


Our participation history



Our participation history

2016



Structure earthquake prediction
4th place out of 28

2017



Structure earthquake prediction
8th place out of 32
Arhitecture
3rd place out of 32

2018



Structure earthquake prediction
7th place out of 40

2019



-Structure earthquake prediction
5th place out of 38
-Project presentation
2nd place out of 38
-Special award
Kinematics Award for the Spirit
of the Competition



EERI UTCB – Student Chapter



EERI UTCB – Student Chapter

The team that will represent Romania and the Technical University of Civil Engineering at the international competition consists of ten students.



Alexandru **CRUCERU**
Team captain



Ana Maria **CETEA**



Madalina **NEGUȚ**



Gabriel **GANEA**
Vice-captain



Bianca **GROSU**



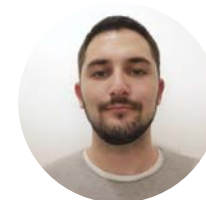
Mircea **CARAGEA**



David **GUNESCU**
Secretary



Alexandru **ROȘU**



Theodor **VINAGA**



Florin **HARABAGIU**
architect

EERI UTCB – Student Chapter - TEAM ADVISORS



Professor Radu VĂCĂREANU, UTCB

2016 – present
U.T.C.B. Rector
2012-2016
U.T.C.B. Vice-Rector for Research
2002-2008
Director - National Center for Seismic Risk Reduction
Romania
Advanced studies in the Earthquake Engineering field at the Building Research Institute, Tsukuba, Japan



Associate Prof. Mihail IANCOVICI Ph.D., UTCB

2011 - prezent
Director of Mechanics of Structures Department
2008 - 2009
Director - National Center for Seismic Risk Reduction
Romania
Advanced studies in the Engineering Seismology and Earthquake Engineering field at the Building Research Institute, Tsukuba, Japan



Associate Prof. Viorel POPA Ph.D., UTCB

2016 – present
Dean of Civile Engineering Faculty
2015-2016
Director of Reinforced Concrete Buildings Department
Advanced studies in the Earthquake Engineering field at the Building Research Institute, Tsukuba, Japan
“Seismic disaster preparedness in Japan” - Tokyo University, Institute of Industrial Science



Industry advisor

eng. Dragoș MARCU
General Manager Popp & Asociații



Estimated budget



Estimated budget

To have the best training for our students we need a shake table for demonstrations and research. Also to represent Romania and to facilitate the participation of our team in the international seismic design competition, we need financial support through sponsorships. The estimated budget covers the costs of modelling, transport and accommodation for students.

BUDGET

Shake table	21000 €
Structure model and transportation	3500 €
Competition registration	1500 €
Students transport	10000 €
Students accommodation and meals	6000 €
Students visa and registration	1500 €

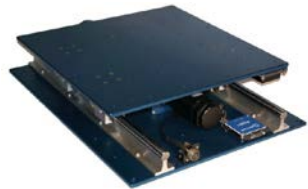


Sponsors benefits



Sponsors benefits

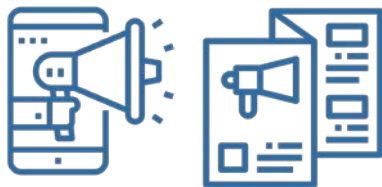
YOUR COMPANY NAME AND LOGO WILL APPEAR AND BE MENTIONED:



▶ On the shake table



▶ in posts about the contest on A.S.C.B., U.T.C.B. and HUB UTCB, Facebook and Instagram pages



▶ on the team's advertising promotionals, press releases and TV appearances



▶ on the Civil Engineering Faculty website page dedicated to the competition, but also on the flag and team shirts to be worn at the competition.